

Gunnebo ImmSec - HS MK3

MY_2025 3rd Generation ABC Gate

The new Gunnebo ImmSec HS is a specifically designed double gate interlock solution, designed to streamline border crossing procedures in ABC (Automated Border Control) applications.

The product is predisposed to integrate a wide selection of multi-modal biometrics (facial, fingerprint, and/or iris recognition) and ePassport (ICAO-compliant) readers to securely and efficiently manage the complex border crossing procedures.

The system enhances security, reduces waiting times, and supports high-throughput environments such as airports and cruise ports.

Gunnebo ImmSec design is elegant and minimalistic with prevalence of transparent surfaces, to fit most of architectural styles. The very limited footprint and configurable lengths makes the new ImmSec the perfect solution to combine high security with space constraints.

Technical specifications

Features

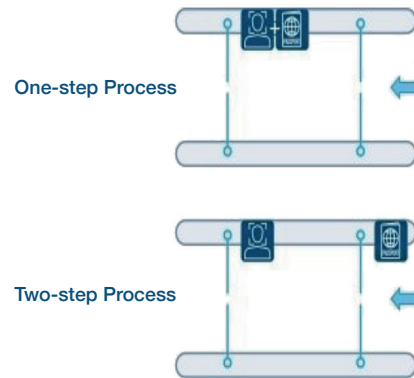
- High reliability DC motor and brake mechanism
- Fail safe (in entry) and fail lock (in exit) mechanisms
- New Gunnebo CG3 Electronic platform based on Linux-based SBC controller
- REST-API communication protocol over TCP/IP (software emulator available)
- **Casework:** 304 grade grained stainless steel and anodized aluminum
- **Finish:** Optional powder coating in any RAL color
- **Moving panels:** 10mm toughened glass
- **Side panels:** 10mm toughened glass
- Predispositions to integrate third party CCTV camera and Intercom system

Functions and Operational Modes

- Uni-directional electronic passage control with single person detection and monitoring
- Optional overhead stereo camera for unicity detection and monitoring
- Entry doors can open in reverse direction to empty mantrap towards in case of rejection
- 3 configurable Modes selectable by key switch and remote protocol, for example:
 - ✓ Emergency Mode: exit door is locked-closed and the entry door is open.
 - ✓ Cleaning/maintenance mode: both doors open, alarms disabled
 - ✓ Running mode – normal operation

1-step and 2-steps variants

- **One-Step:** combines the verification of the passport and biometrics inside the mantrap. Once the gate has processed a passenger and closed exit doors, the entry doors automatically open to allow a new user to get in and close immediately after. No verification hardware in entry legs.
- **Two-Steps:** passport control is performed before the entry doors, on integrated passport reader. Doors will open only after the previous passenger has completed biometric check and left the mantrap through exit doors.



Detection options

- A.** IR sensor beams: through beam infrared sensors detect and count passages through entry door. Mantrap corridor infrared sensors positioned at bottom and upper level detect presence and jump in/jump out events.
- B.** Overhead detection (optional) combined with IR sensor beams: allows the best unicity detection, being overhead 3D camera with AI image processing capable of distinguishing persons from luggage and objects.

Technical specifications

Technical data

Power Supply	110/230Vac 50/60Hz
Power Rating	Peak 450VA* Standby 170VA
Operating Temperature	-5°C to 45°C 95% RH non-condensing
MTTR	< 30 minutes
MCBF	10 million cycles

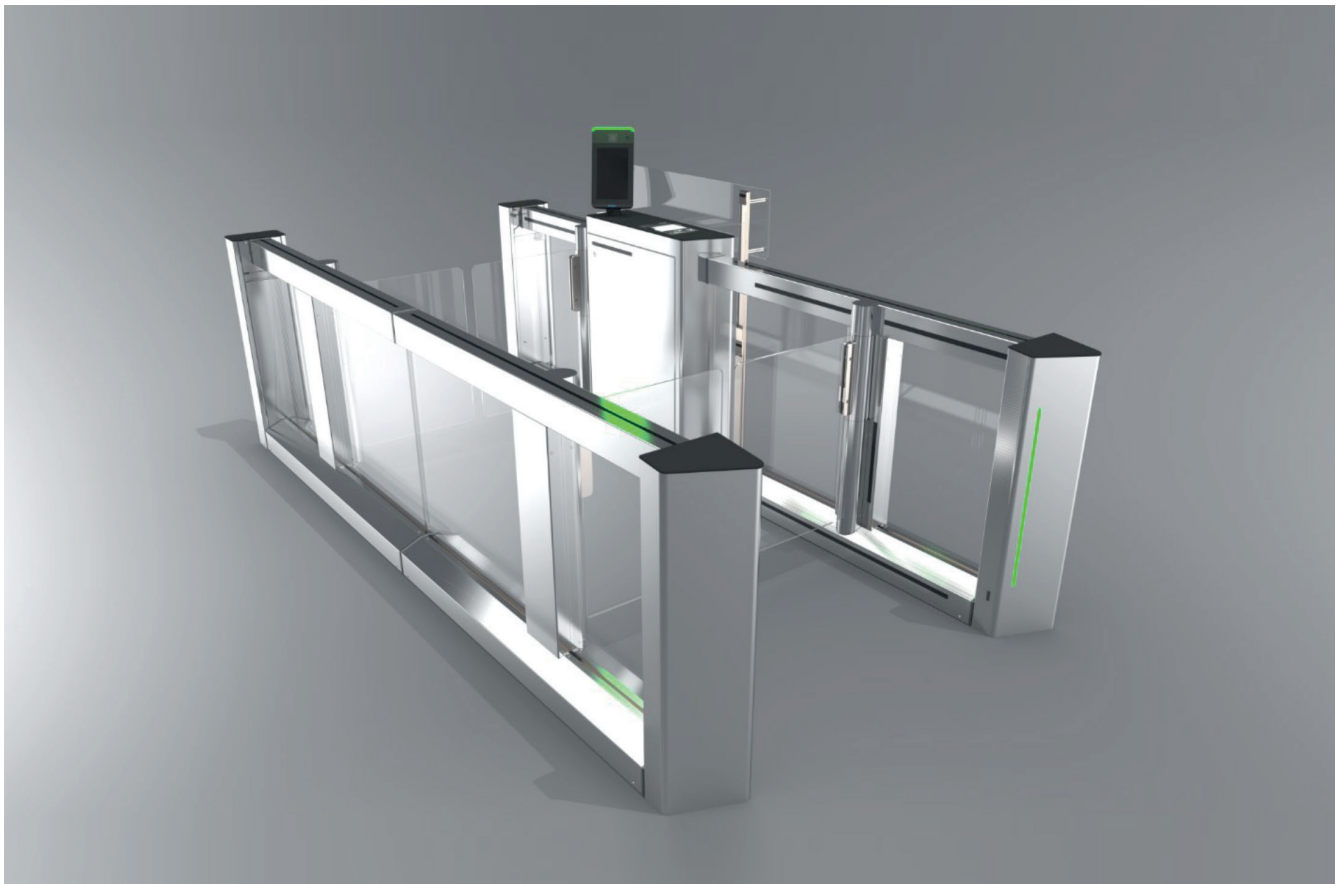
*Approx 450VA including all third party peripherals in a typical configuration.

Dimensions

- 600mm and 950mm net passage width
- 4 mantrap lengths 1680mm, 1865mm, 2020mm and 2190mm for 2-steps, and 3150mm, 3335mm, 3490mm and 3660mm for 1-step
- Overall lengths (2-steps) 3500mm, 3685mm, 3840mm and 4010mm
- Cabinet width 220mm
- Swing panels height: 1200mm for entry, 1500mm for exit doors
- Side protection glasses (optional): 1200mm height
- Overhead camera support (optional): 2365mm max height

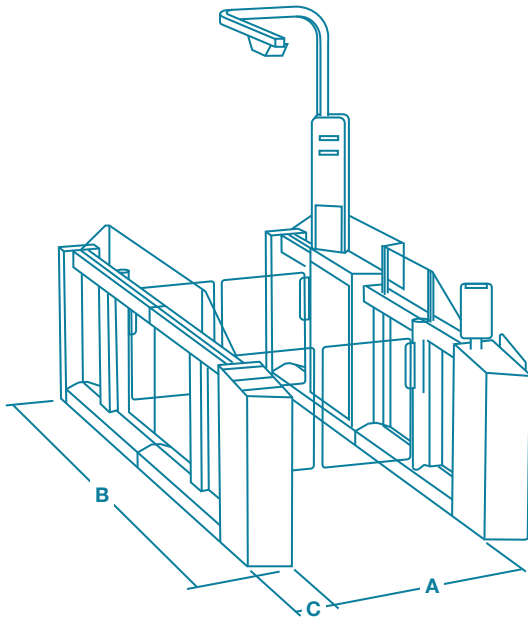
Benefits

- Accelerates the immigration process
- Automates the entry process and collection of data
- Superior single-person detection system
- Increased security with integrated biometric technology
- Reduction in staffing costs
- The glazed passageway gives high visibility of passengers

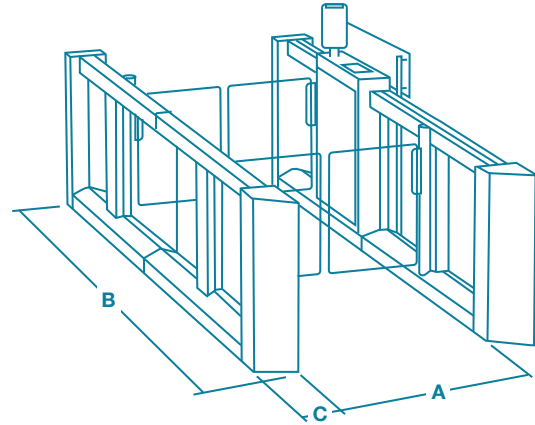


1-step type, without OH camera detection

General dimensions



Two-steps version



One-step version

Dimensions

	A Passage width ¹	B Overall length ²	C Cabinet width ³
ImmSec - HS MK3 Two-step	600 and 950 (up to 1200mm as option)	3500, 3685, 3840, 4010	220
ImmSec - HS MK3 One-step	600 and 950 (up to 1200mm as option)	3150, 3335, 3490, 3660	220

1,2,3. Dimensions in mm.

May require lifting equipment. For details refer to installation detail drawings.

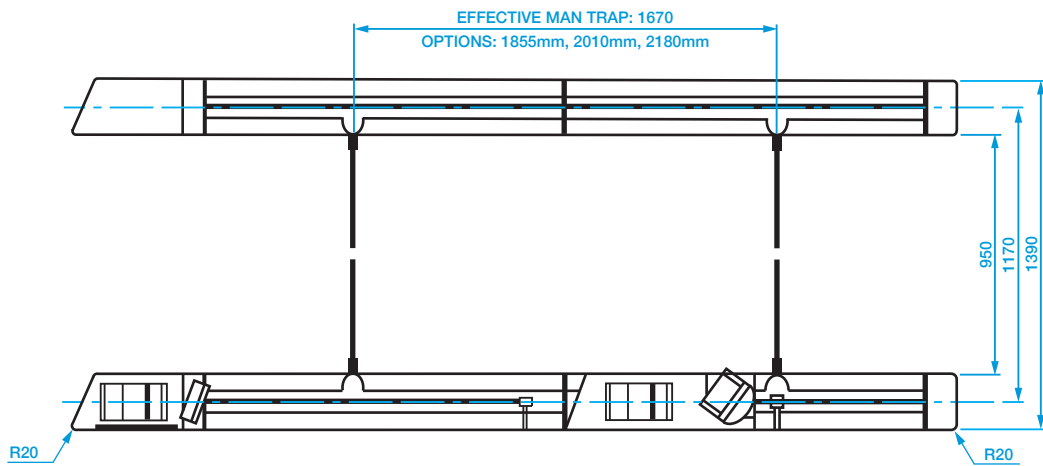
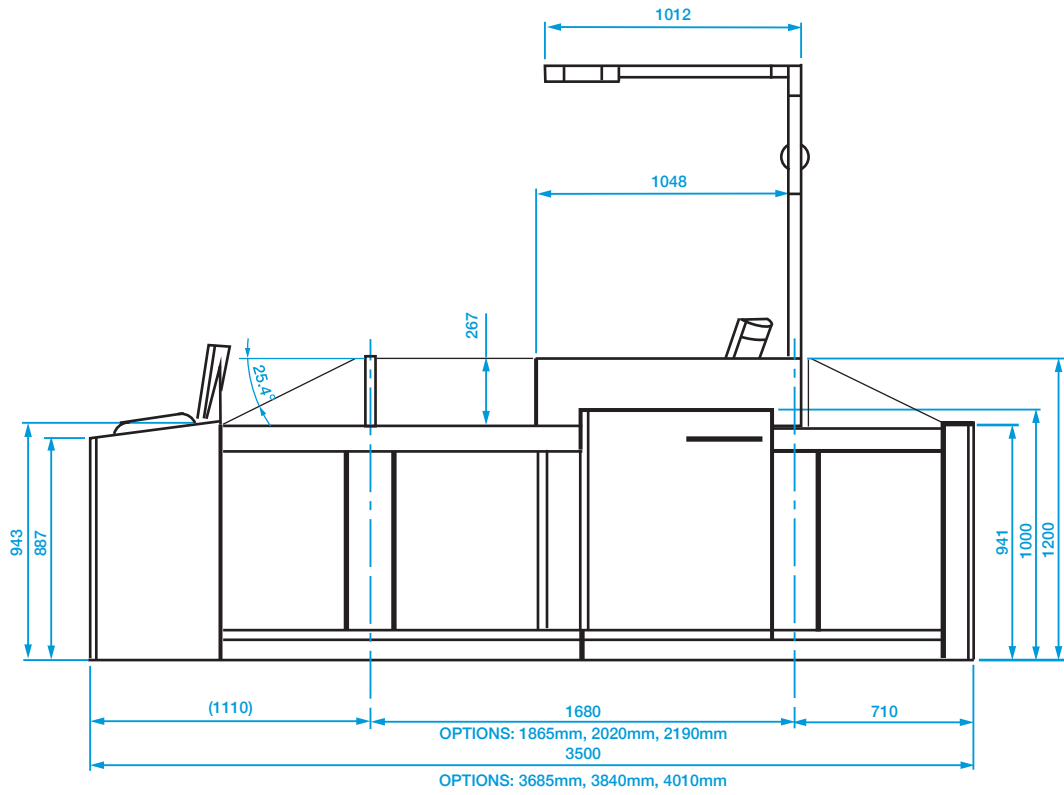
Note:

Concrete Base to specification at least fck (cube) 300N/mm² of resistance. Base to be flat and level to +/- 5mm over footprint area.

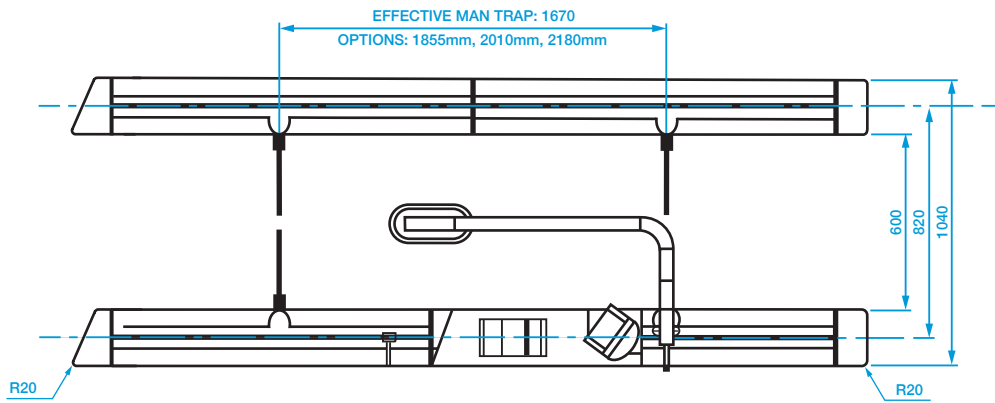
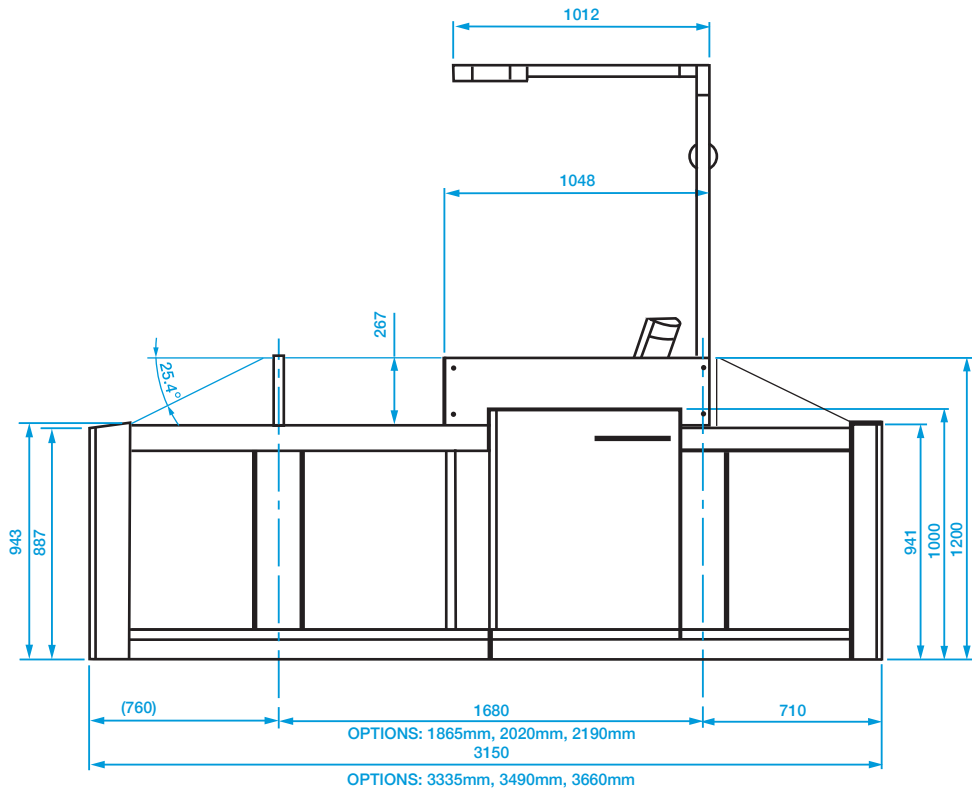
Important: Any horizontal pipe or conduit running below the Tripod Turnstile must be at least 140mm below FFL. Metal conduit for cables should be raised at least 50mm from foundation. It is the customer's responsibility to ensure the structural integrity and strength of the installation location. The dimensions given in this Product Data Sheet are for information only. In order to prepare the installation site, please refer to your usual Gunnebo Customer Service contact.

Conditions of use: When using Gunnebo's security access control gates, for security and safety reasons, children must be supervised by an adult at all times.

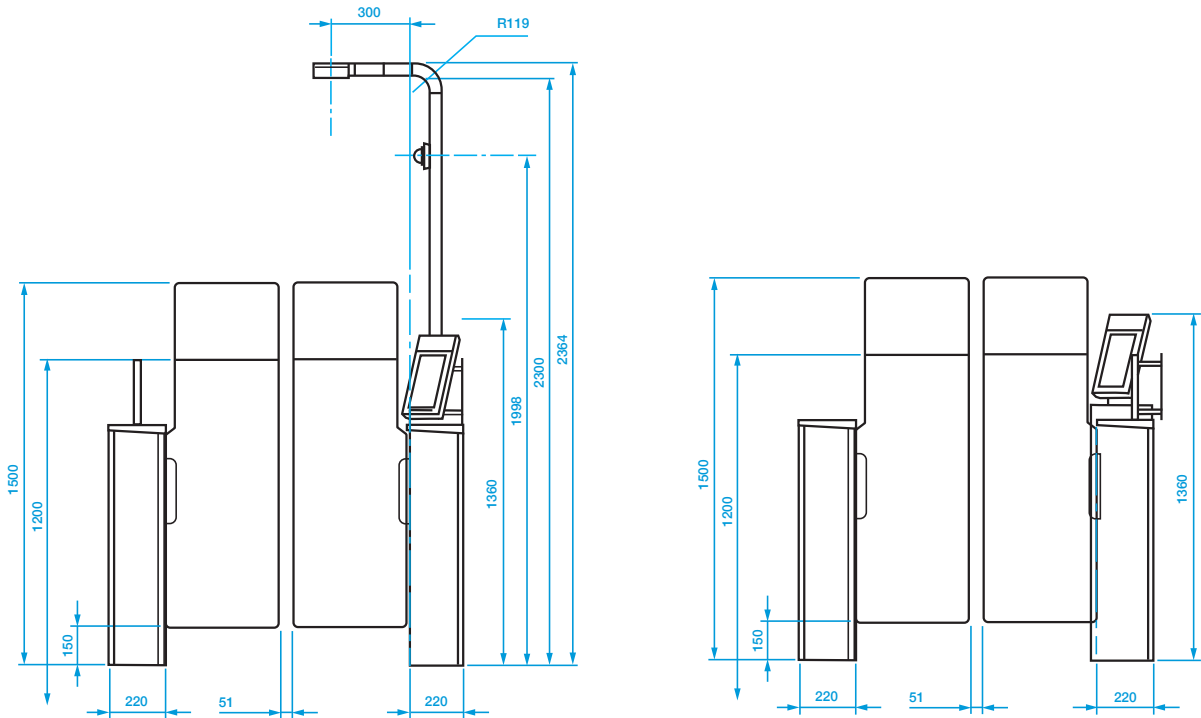
General dimensions - 2 steps version



General dimensions - 1 step version



General dimensions - 1 and 2 steps versions



Biometric totem option

International Standards

CE Compliance meeting the following directives:

- 2006/42/EC Machine Directive
- 2014/35/EU Low Voltage Directive
- 2014/30/EU EMC Directive
- 2011/65/EU RoHS Directive
- 2021/19/EU WEEE Directive

Norms

- EN IEC 61000-6-1:2019 Immunity standard for residential, commercial and light-industrial environments
- EN IEC 61000-6-3:2021 Generic standards - Emission standard for equipment in residential environments
- EN 61000-3-2 (2019) / A2 2024 Limits for harmonic current emissions (equipment input current ≤ 16 A per phase)
- 61000-3-3:2013/A2:2021 Limitation of voltage changes, voltage fluctuations and flicker in public low-voltage supply systems, for equipment with rated current ≤ 16 A per phase and not subject to conditional connection
- EN 60335-1, EN 60335-2-103, EN 17352, EN 12100, EN 13849-1.
- A.8 Durability test of EN 17352.
- Impact forces limited according to EN16005 and EN 17352

Gunnebo Entrance Control Ltd
The Gate House
Ashdown Business Park
Michael Way
Maresfield
East Sussex
TN22 2DU
United Kingdom
Tel: +44 (0)1825 761 022

Learn more about our full range of airport security solutions



Gunnebo ImmSec - HS MK3

Design and production: Gunnebo. Photos Credits: Gunnebo. The data given in this material may be subject to change without further notice. The Gunnebo logos and "Gunnebo - For a safer world" are registered trademarks of Gunnebo AB.



Take advantage of our knowledge:
www.gunneboentrancecontrol.com

GUNNEBO[®]
Entrance Control